

TURNBUCKLE BODY

316-NM STAINLESS STEEL



Import



Drop
Forged



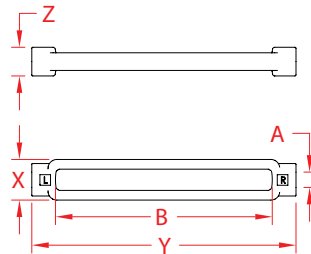
Load
Rated



Suncor
Exclusive



MIL-
SPEC



ITEM	A (size)	B (adjustment)	WLL (lb)	X (height)	Y (length)	Z (width)	WT (lb)	PACKAGING TYPE	EACH (qty)	INNER (qty)	CARTON (qty)	UPC
S0106-BD07	1/4"	4.00"	500	0.75"	4.80"	0.51"	0.16	POLYBAG	1	10	150	791506027850
S0106-BD08	5/16"	4.50"	800	0.83"	5.53"	0.58"	0.24	POLYBAG	1	10	120	791506027867
S0106-BD10	3/8"	6.00"	1,200	0.94"	7.18"	0.67"	0.35	POLYBAG	1	10	100	791506027874
S0106-BD13	1/2"	6.00"	2,200	1.14"	7.56"	0.80"	0.55	POLYBAG	1	1	60	791506027881
S0106-BD16	5/8"	6.00"	3,500	1.38"	7.81"	0.96"	0.90	POLYBAG	1	1	40	791506027898
S0106-BD20	3/4"	6.00"	5,200	1.68"	8.23"	1.17"	1.39	POLYBAG	1	1	25	791506027904
S0106-BD25	1"	6.00"	8,000	2.22"	9.07"	1.56"	2.82	POLYBAG	1	1	10	791506027911
S0106-BD25-1	1"	12.00"	8,000	2.20"	14.50"	1.59"	4.18	POLYBAG	1	1	5	791506027928
S0106-BD32-1	1-1/4"	12.00"	12,500	2.60"	15.25"	1.90"	5.50	POLYBAG	1	1	6	791506027935
S0106-BD38-1	1-1/2"	12.00"	17,000	3.20"	15.75"	2.27"	9.30	POLYBAG	1	1	4	791506027942

NOTE:
MEETS THE REQUIREMENTS OF: MIL-DTL-32655. MEETS WLL & DIMENSIONS OF ASTM SPECIFICATION F1145-92, TYPE 1.
ALL DIMENSIONS ARE NOMINAL (+/- 3%) AND ARE SUBJECT TO CHANGE WITHOUT NOTICE.